



The SX-460

The SX-460 is able to handle pipe sizes from 16" to 28" and as these pipe sizes are extremely common the SX-460 is used extensively throughout the United States.



LIFT CAPACITY
46-ton



WEIGHT
70,550 lb



HORSEPOWER
250 HP

Specifications

Engine

Type	Caterpillar
Model	C7 ACERT
Net flywheel power (DIN 6270-SAEJ 1349)	250 HP - 184 kW
Governed speed	2,200 rpm
Displacement	442 in ³ (7.2 L)

Hydraulic System

Main pumps	(Bosch-Rexroth) 3 independent variable pumps
Maximum capacity	2 x 58.1 US gal/min (2 x 220 L/min) 1 x 72.1 US gal/min (1 x 273 L/min)
Maximum operating pressure	2 x 6,090 p.s.i. (2 x 420 bar) 1 x 4,640 p.s.i. (1 x 320 bar)
Service pumps	1 tandem gear type
Maximum capacity	13 US gal/min (50 L/min)

Transmission

Type	Hydrostatic closed circuit
Brakes	(2) Integrated negative control
Final drives	Epicycloidal oil soaked
Maximum speed:	
- 1 speed	1.8 mph (2.9 km/h)
- 2 speed	4.5 mph (7.2 km/h)

Controls

Type	Twin pilot operated
Safety	Emergency shut-off
TPS System: twin steering system with two levers to control the tracks independently in order to achieve small and precise movements.	

Track Frame

HHard track frame with sealed and lubricated chain	
Number of bottom rollers	8+8
Number of carrying rollers	2+2
Gauge	7.2 ft (2.22 m)
Length of track on the ground	10.5 ft (3.2 m)
Standard shoes width	27.5 in (70 cm)
Ground contact area	6,944 in ² (48,800 cm ²)
Optional shoes	

- Option 1 width	23.6 in (60 cm)
- Ground contact area	5,952 in ² (38,400 cm ²)
- Option 2 width	29.9 in (76 cm)
- Ground contact area	7,595 in ² (49,000 cm ²)

Adjustable Counterweights

QD-CS: quick-disconnected counterweight system for quick disassembly. (entire counterweight pack.)	Removable Counterweight
	8 leaves 1,215 lb (550 kg) each
extendable	Total weight 16,300 lb (7,400 kg)

Boom

Type	Std. 18 ft (5.5 m) welded box square section
Optional	20 ft (6.1 m) welded box square section
Diameter wire rope	3/4 in (19 mm)
Minimum breaking strength rope	72,530 lb (323 KN)
Part load line	4
Part boom line	4

Fluid Capacities

Fuel tank	105.6 US gal (400 L)
Hydraulic system circuit	55.5 US gal (210 L)
Cooling system	12 US gal (45 L)
Engine oil	7 US gal (27 L)

Electric System

Operating voltage	24 V
Maintenance free supplied batteries	2
Capacity (total)	160 Ah
Starter capacity	7.5 Kw
Alternator	55 A

Winch Specifications

Hydraulic Winches

Type	Hydraulic controlled drums (reversible.) Driven by variable flow hydraulic pump and control valve block in open circuit.	
Final drive	Compact hydrostatic drive unit, three-stage planetary gear	
Brakes	Integrated oil bath multiple disk brake, spring applied hydraulic release	
Winch	Hook	Boom
Drum diameter	15.3 in (39 cm)	15.3 in (39 cm)
Flange Diameter	23.2 in (59 cm)	20.8 in (53 cm)
Drum Length	14.1 in (36 cm)	14.1 in (36 cm)
Capacity (3/4 in [19 mm])	446 ft (136 m)	344 ft (105 m)
Wire rope installed	167 ft (51 m)	131 ft (40 m)
Hook Speed	0-79 ft/min (0-24 m/min)	

Engine

Type	Bosch-Rexroth axial piston variable displacement pump
------	-------------------------------------------------------

Control

Type	Pilot units for remote control of winch motors Progressive and sensitive operations
------	----------------------------------------------------------------------------------------

Valves

Type	Bosch load-sensing mobile control block proportional directional valves
Maximum capacity	37 US gal/min (140 L/min)
Working pressure	3,625 p.s.i. (250 bar)

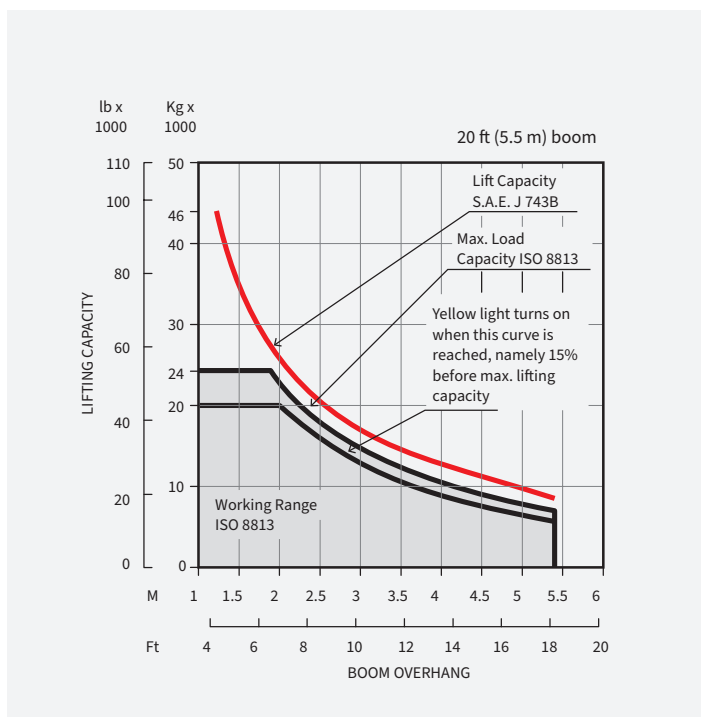
Hydraulic Tank

Type	Pressurized type
Max capacity	33 US gal (125 L)

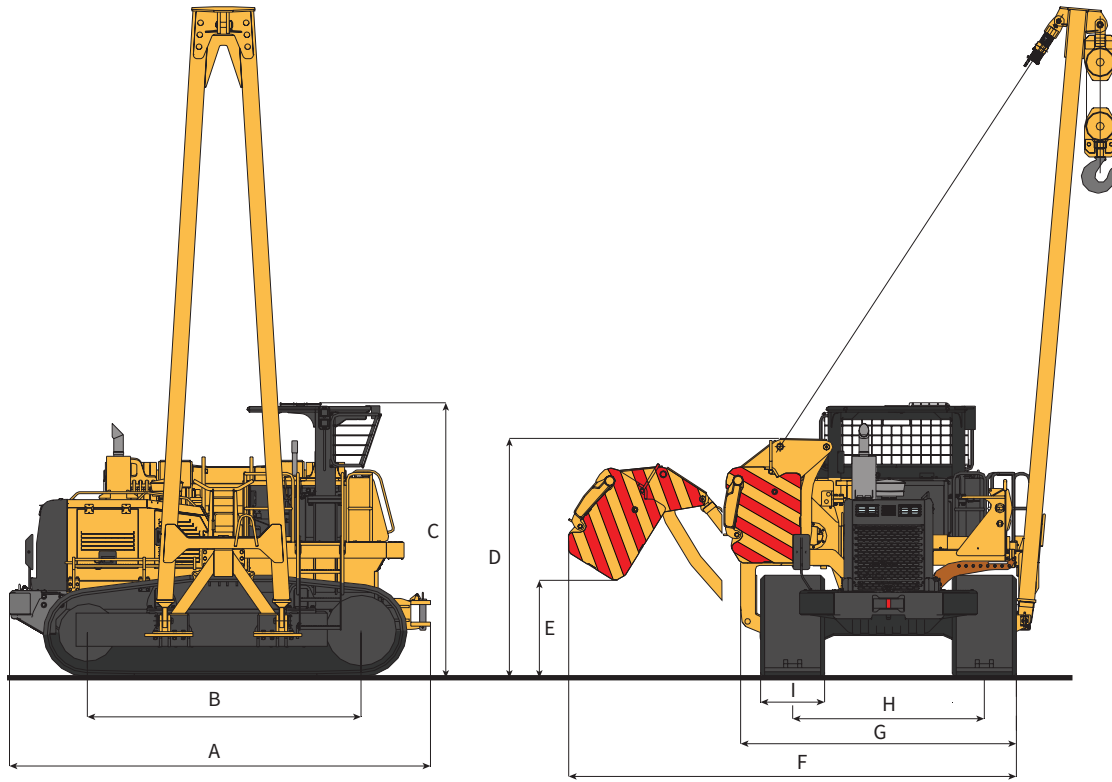
Filter

Type	Donaldson FI0500
Maximum capacity	132 US gal/min (500 L/min)

Lifting Capacity



Dimensions



A	14.8' (4.5 m)
B	10.2' (3.1 m)
C	10.5' (3.2 m)
D	9.2' (2.8 m)
E	2.6' (80 cm)
F	16.5' (5 m)
G	11.6' (3.54 m)
H	7.3' (2.22 m)
I	24" (61 cm)



2200 Post Oak Blvd., Ste. 1400, Houston, TX 77056

Main 281.457.4400 | U.S. Toll Free 800.383.2666 | sales@superiormftg.com | www.superiormftg.com

Weights and dimensions are approximate. All information is subject to change without notice. Superior Manufacturing is a trademark of Worldwide Machinery. All other trademarks are the property of their respective owners. All rights reserved.

WORLDWIDE
MACHINERY

Exclusive Distributor of Superior Manufacturing