



## ***About the ST-300X***

With a whopping 30,000 lb load capacity this machine can handle even the most demanding tasks.

### **Available configurations**

- Flat Bed
- Dump Bed
- Sand-blasting Deck
- Welding Deck
- Personnel Carrier
- Water Tanker
- Fifth Wheel Hitch
- Knuckle Boom, and more!



## Index

|                             |            |
|-----------------------------|------------|
| Specifications / Dimensions | 1          |
| Welding Deck                | 2          |
| Sand-blasting Deck          | 3          |
| Flat Bed                    | 4          |
| Dump Bed                    | 5          |
| Personnel Carrier           | 6          |
| Water Tank                  | 7          |
| Fifth Wheel & Pintle Hitch  | 8w         |
| Contact                     | Back Cover |



**LOAD CAPACITY**  
30,000 lb



**WEIGHT**  
39,683 lb



**HORSEPOWER**  
275 HP



## Rubber Tracks

### Specifications

|                     |  |
|---------------------|--|
| Engine              | C-7.1 Tier IV Final                    |
| Horsepower          | 275 HP / 205 kW                        |
| Governed speed      | 2,200 rpm                              |
| Maximum speed       | 5.6 mph (9 km/h)                       |
| Weight              | 39,683 lb (18,000 kg)                  |
| Load capacity       | 30,000 lb (13,610 kg)                  |
| Hydraulic boom size | 3,300 lb (at 22 ft) / 2.5 ton (at 7 m) |

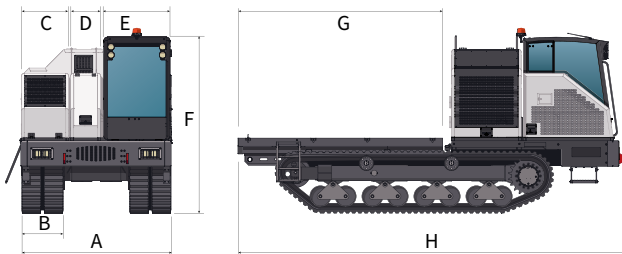


## Steel Tracks

### Specifications

|                     |  |
|---------------------|--|
| Engine              | C-7.1 Tier IV Final                    |
| Horsepower          | 275 HP / 205 kW                        |
| Governed speed      | 2,200 rpm                              |
| Maximum speed       | 3.7 mph (5 km/h)                       |
| Weight              | 41,888 lb (19,000 kg)                  |
| Load capacity       | 30,000 lb (13,610 kg)                  |
| Hydraulic boom size | 3,300 lb (at 22 ft) / 2.5 ton (at 7 m) |

### Dimensions



|   |                |
|---|----------------|
| A | 9'10" (3 m)    |
| B | 27.6" (70 cm)  |
| C | 79" (80 cm)    |
| D | 3'3" (1 m)     |
| E | 3'7" (1.1 m)   |
| F | 10'2" (3.12 m) |
| G | 12' (3.65 m)   |
| H | 21' (6.4 m)    |

# Welding Deck



## About the Welding Deck

The welding deck is fitted on Superior's light duty flatbed and can be customized to the customer's exact specifications. Automatic welding decks are also available.

### Main Components

- (1) AKSA 100 Generator (or equivalent)
- (1) Champion Compressor D173843 (or equivalent)
- (4) Miller XMT 350 Field Pro Welders or Lincoln Electric V350 Welders
  - 4 x 100' Leads
  - 4 x 100' Grounds
  - 4 X Remotes
- (1) 80 Gallon Air Tank
- (1) Electrical Box
- (1) Knuckle Boom

### Dimensions

|        |                 |
|--------|-----------------|
| Length | 12.5 ft (3.8 m) |
| Width  | 8.5 ft (2.6 m)  |

### Lincoln® V350

|                        |   |
|------------------------|---|
| Input Power            | 200/220/380/415/440/1/3/50-60                 |
| Rated Output           | 350A/34V@60%<br>300A/32V@100%                 |
| Input Current          | 32a   |
| Output Range           | 5-425a  |
| Dimensions (H x W x D) | 14.8 x 13.3 x 27.9 in (37.6 x 33.8 x 70.9 cm) |
| Net Weight             | 82.6 lb (37.5 kg)                             |

### Miller XMT® 350 FieldPro™

|                                |   |
|--------------------------------|---|
| Weldable Metals                | Aluminum<br>Specialty Metals<br>Stainless Steel<br>Steel  |
| Input Voltage                  | 208 V<br>220/230/240 V<br>380/400 V<br>460/480 V<br>575 V |
| Rated Carbon Diameter          | 1/4 in (6.4 mm)   |
| Input Phase                    | 1- and 3-Phase  |
| Input Hz                       | 50/60 Hz  |
| Current Type                   | DC  |
| Portability                    | Handle(s)   |
| Running Gear / Cart (Optional) |   |
| Weld Output                    | CC / CV   |
| Dimensions (H x W x D)         | 19 x 16 x 29 in (48.3 x 40.6 x 73.7 cm)                   |
| Net Weight                     | 100.5 lb (45.3 kg)  |

# Sand-blasting Deck



## About the Sand-blasting Deck

The sand-blasting deck features a lowered rear platform for easy access which makes loading material into the pod easier, with both sides of the platform open for loading/unloading of material on pallets.

### Main Components

- (1) Marco Sand-blaster with 750 CFM Aftercooler
- (1) Doosan P425 HP375 Air compressor

### Dimensions (with running gear)

|                            |                     |
|----------------------------|---------------------|
| Length                     | 26.6 ft (8 m)       |
| Width                      | 8.3 ft (2.53 m)     |
| Height                     | 10 ft (3 m)         |
| Track Width                | 8.3 ft (2.53 m)     |
| Shipping Weight (w/o fuel) | 4,470 lb (2,027 kg) |
| Working Weight (with fuel) | 5,030 lb (2,281 kg) |

### Dimensions (Platform Only)

|                            |                     |
|----------------------------|---------------------|
| Length                     | 18.5 ft (5.64 m)    |
| Width                      | 8.3 ft (2.53 m)     |
| Height                     | 5.5 ft (1.67 m)     |
| Shipping Weight (w/o fuel) | 4,207 lb (1,908 kg) |
| Working Weight (with fuel) | 4,767 lb (2,162 kg) |

### Compressor (Rotary Screw/Single-stage)

|                          | Low Pressure                     | High Pressure                      |
|--------------------------|----------------------------------|------------------------------------|
| Free-Air Delivery        | 425 cfm (12 m <sup>3</sup> /min) | 375 cfm (10.6 m <sup>3</sup> /min) |
| Rated Operating Pressure | 100 psig (6.9 bar)               | 150 psig (10.3 bar)                |
| Pressure Range           | 80 psig (5.5 bar)                | 175 psig (12.1 bar)                |

|                               |                     |
|-------------------------------|---------------------|
| Air Discharge Outlet Size     | 1.25 in (31.8 mm)   |
| Air Discharge Outlet Quantity | 1                   |
| Fuel Tank Capacity            | 60 gal (227 liters) |

### Engine

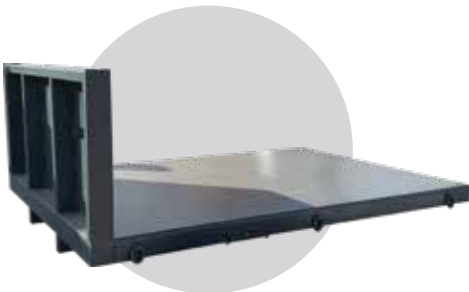
|                      |                        |
|----------------------|------------------------|
| Make/Model           | Cummins/QSB4.5         |
| Emissions Tier Level | Tier 4 Final (T4F)     |
| Number of Cylinders  | 4                      |
| Displacement         | 272 cu in (4.5 liters) |
| Electrical           | 24V                    |

|                               | Low Pressure    | High Pressure      |
|-------------------------------|-----------------|--------------------|
| Rated Speed                   | 2200 rpm        | 1950 rpm           |
| Idle Speed                    | 1500 rpm        | 1500 rpm           |
| Bhp @ Rated Speed             | 130 Bhp (97 kW) | 138 Bhp (102.9 kW) |
| Hrs of Operation at Full Load | 10.9            | 10.6               |



## About the Flat Bed

The flat bed is made from A36 steel with 5/16 inch thickness for the sides, floor and head-board and has three heavy duty grommets on either side for securing the load (heavy duty only), a tuckable step ladder on either side and hydraulic cylinders for load dumping.



Heavy Duty Flat Bed



Light Duty Flat Bed

### ST-150X Flat Bed Specs

**Light Duty**

|                                |  |
|--------------------------------|--|
| Flat Bed Dimensions (L x W)    | 12 x 8.3 ft (3.65 x 2.5 m)                   |
| Machine Dimensions (L x W x H) | 22.08 x 8.2 x 10.38 ft (6.73 x 2.5 x 3.16 m) |

**Heavy Duty**

|                                |  |
|--------------------------------|--|
| Flat Bed Dimensions (L x W)    | 12 x 8.3 ft (3.65 x 2.5 m)                   |
| Machine Dimensions (L x W x H) | 22.08 x 8.2 x 10.38 ft (6.73 x 2.5 x 3.16 m) |
| Tilt Angle                     | 55°  |

### ST-220X/R Dump Bed Specs

**Heavy Duty**

|                                |                                       |
|--------------------------------|---------------------------------------|
| Flat Bed Dimensions (L x W)    | 12 x 9.8 ft (3.65 x 2.98 m)           |
| Machine Dimensions (L x W x H) | 23 x 9.84 x 10.57 ft (7 x 3 x 3.22 m) |
| Tilt Angle                     | 55°                                   |

### ST-300X Dump Bed Specs

**Heavy Duty**

|                                |                                       |
|--------------------------------|---------------------------------------|
| Flat Bed Dimensions (L x W)    | 12 x 9.8 ft (3.65 x 2.98 m)           |
| Machine Dimensions (L x W x H) | 23 x 9.84 x 10.57 ft (7 x 3 x 3.22 m) |
| Tilt Angle                     | 55°                                   |



## About the Dump Bed

The heavy duty dump bed is made with a reinforced steel cross-frame to withstand the high stresses of heavy material. The dump bed can fit on any size carrier.



### ST-150X Dump Bed Specs

|                                |   |
|--------------------------------|---|
| Dump Bed Dimensions (L x W)    | 11.5 x 8.2 ft (3.5 x 2.5 m)                 |
| Machine Dimensions (L x W x H) | 21.09 x 8.2 x 10.38 ft (6.4 x 2.5 x 3.16 m) |
| Tilt Angle                     | 55°   |
| Capacity                       | 5.62 yd <sup>3</sup> (4.3 m <sup>3</sup> )  |

### ST-220X/R Dump Bed Specs

|                                |  |
|--------------------------------|--|
| Dump Bed Dimensions (L x W)    | 10.75 x 9.7 ft (3.7 x 2.95 m)              |
| Machine Dimensions (L x W x H) | 20.5 x 9.8 x 10.45 ft (6.25 x 3 x 3.2 m)   |
| Tilt Angle                     | 55°  |
| Capacity                       | 6.5 yd <sup>3</sup> (4.96 m <sup>3</sup> ) |



*Optional Tailgate*

### ST-300X Dump Bed Specs

|                                |  |
|--------------------------------|--|
| Dump Bed Dimensions (L x W)    | 10.75 x 9.7 ft (3.7 x 2.95 m)              |
| Machine Dimensions (L x W x H) | 20.5 x 9.8 x 10.57 ft (6.25 x 3 x 3.22 m)  |
| Tilt Angle                     | 55°  |
| Capacity                       | 7.5 yd <sup>3</sup> (5.74 m <sup>3</sup> ) |

# Personnel Carrier



## Personnel Carrier

The personnel carrier is the ultimate solution for transporting workers to and from the jobsite through a muddy or otherwise inaccessible right-of-way.



### Features

- (10) Ten seats, five on each side of carrier with seat belts. Can fit up to 22 seats total.
- Under seat storage compartments, outside access
- Hydraulic driven air conditioner and heating
- Drop down rear step for easy boarding
- (2) Side windows (slide open)
- (2) Side windows (swing open)
- ROPS Certified





## Water Tank

The water tank platform is specifically built for the ST-220X carrier. It consists of a 2,000 gallon tank mounted on a 12' flat bed.



### Features

- 3" hydraulic pump with 3" piping
- 3 adjustable spray heads (1) on each side and (1) on the rear
- Can be loaded from overhead standpipe, ground level fire hydrant, or pump
- Includes steps accessing the top of the tank with safety handrails
- Easy access pull down ladder on right side of the platform
- All controls in the cab next to the operator
- Top mounted covered manhole with closeable hatch
- Drain valves to drain lines and a tank for cold weather or for cleaning the tank

### Dimensions

|                                  |                  |
|----------------------------------|------------------|
| Total Length with Sprayheads Out | 14.6 ft (4.45 m) |
| Width with Sprayheads Out        | 11.25 ft (3.4 m) |
| Height                           | 7.7 ft (2.34 m)  |



# Fifth Wheel & Pintle Hitch



## Fifth Wheel

Superior's fifth wheel attachment uses a Holland FWS1 top plate, which is one of the lightest, most durable top plates available anywhere.

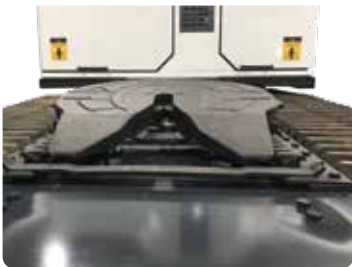


### Features

- Simple and quick lock adjustment pin with 4 incremental positions reduces the risk of over-adjustment.
- A jaw return spring that prevents the jaw from closing while bob-tailing.
- Visible 'red' safety indicator provides driver with an easy, clear visual indication that the wheel is properly coupled. There is also an automatic secondary locking mechanism.

### Dimensions

|                  |                         |
|------------------|-------------------------|
| Top Plate Weight | 222 lb (100 kg)         |
| Load Capacity    | 50,000 lb (22,680 kg)   |
| Pull Capacity    | 150,000 lbs (68,000 kg) |





2200 Post Oak Blvd., Ste. 1400, Houston, TX 77056

Main 281.457.4400 | U.S. Toll Free 800.383.2666 | [sales@superiormftg.com](mailto:sales@superiormftg.com) | [www.superiormftg.com](http://www.superiormftg.com)

Weights and dimensions are approximate. All information is subject to change without notice.  
Superior Manufacturing is a trademark of Worldwide Machinery. All other trademarks are the  
property of their respective owners. All rights reserved.

**WORLDWIDE**  
**MACHINERY**

*Exclusive Distributor of Superior Manufacturing*